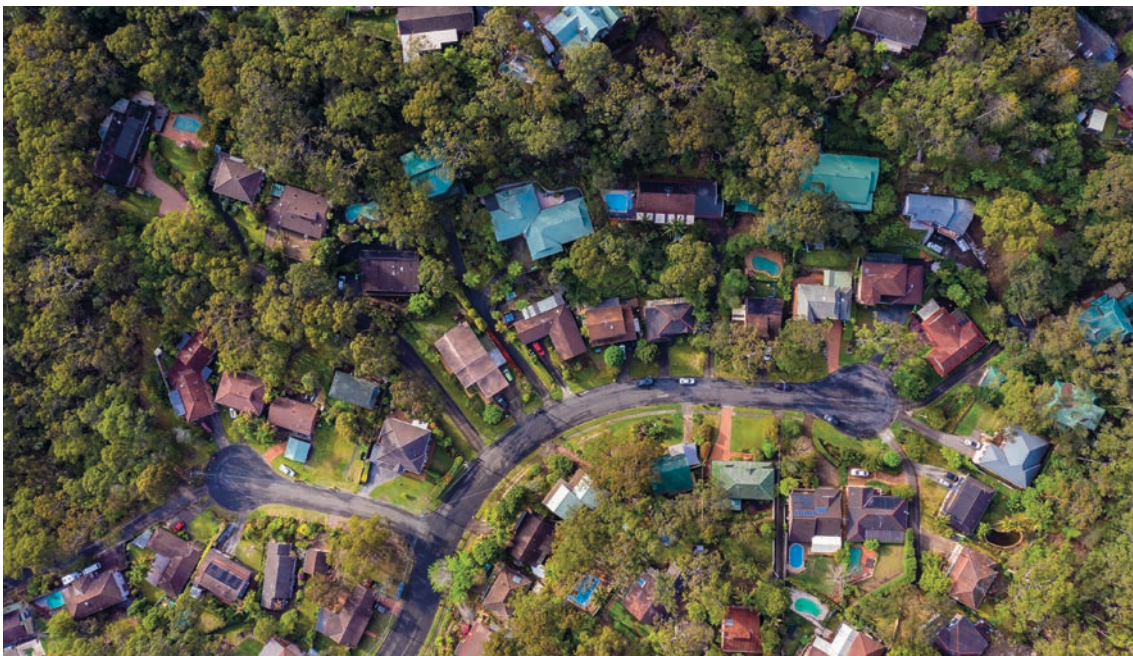




PATHWAY2CM

BY FYB PTY LTD

The FYB Pathway2CM connector has unlimited possibilities to allow your organisation to seamlessly provide two-way integration between Infor Pathway with OpenText Content Manager



Using the FYB Pathway2CM will provide the following benefits:



- ▶ Allows for two-way integration between Pathway and Content Manager, reducing duplication and manual synchronisation or work arounds
- ▶ Real-time automated transfer of metadata and document(s) to Content Manager, eliminating manual batch updating processes and reducing operational costs
- ▶ Streamlined records lifecycle processes leveraging the governance, compliance and disposal functionality of Content Manager, reducing risks associated with non-compliance with government and industry requirements
- ▶ Reduces the duplication of information stored in multiple places, increasing data integrity and providing efficiencies to users for the retrieval of information

What is Infor Pathway?

Infor Pathway provides capabilities specifically for local councils in Australia and New Zealand to improve the efficiency of business processes, including people management, land and property management, revenue and regulatory management.

What is Content Manager?

Content Manager is a governance-based enterprise content document and records management system designed to help organisations manage their business content from creation to disposal.

Version 1.7.X Features

- ▶ Synchronisation of Business Objects from Pathway into Content Manager, including folders, sub folders, and other records
- ▶ Includes the ability to configure pre-defined naming conventions
- ▶ Two-way Document Synchronisation, including
 - Letters and Paperclips generated in Pathway automatically push to Content Manager
 - Ability to access documents stored within Content Manager from Pathway
 - Ability to create and edit documents from either application
- ▶ Includes the ability to configure pre-defined naming conventions
- ▶ Two-way Name and Address Synchronisation, including:
 - Pathway able to push NAR information to Content Manager
 - Changes made to Locations in Content Manager able to update the NAR in Pathway
 - Ability to link a Content Manager location with a name in Pathway
 - Merge Content Manager locations when Pathway Names are merged
- ▶ Ability to launch Pathway from a selected record or Location in Content Manager
- ▶ Ability to create a Service Request from within Content Manager either interactively or automatically into Pathway
- ▶ Easy searching of Content Manager from the Pathway interface
- ▶ Ability to set access controls and security caveats on new records or update existing
- ▶ Ability to download/update missing pathway metadata onto Content Manager records

Prerequisites

- ▶ Content Manager 10x, 10.1x
- ▶ Please refer to the FYB Pathway2CM page on our website for a detailed list of prerequisites

Options

- ▶ Add a subscription to the FYB CM2WebShare to enable automated publishing of documents from Content Manager to ePathway

Terms and Conditions

- ▶ Subscription pricing

Do more with the FYB Pathway2CM Connector, don't be limited to what the connector "can do" ask what it is you want it to do. Contact us today to organise a demonstration and subscription pricing.